



I-Max, new generation of dental panoramic

**I-MAX**

# I-Max New generation

## Packaging unit



The first panoramic which can be put with the case in a standard car!

# I-Max New generation

## Install of the unit

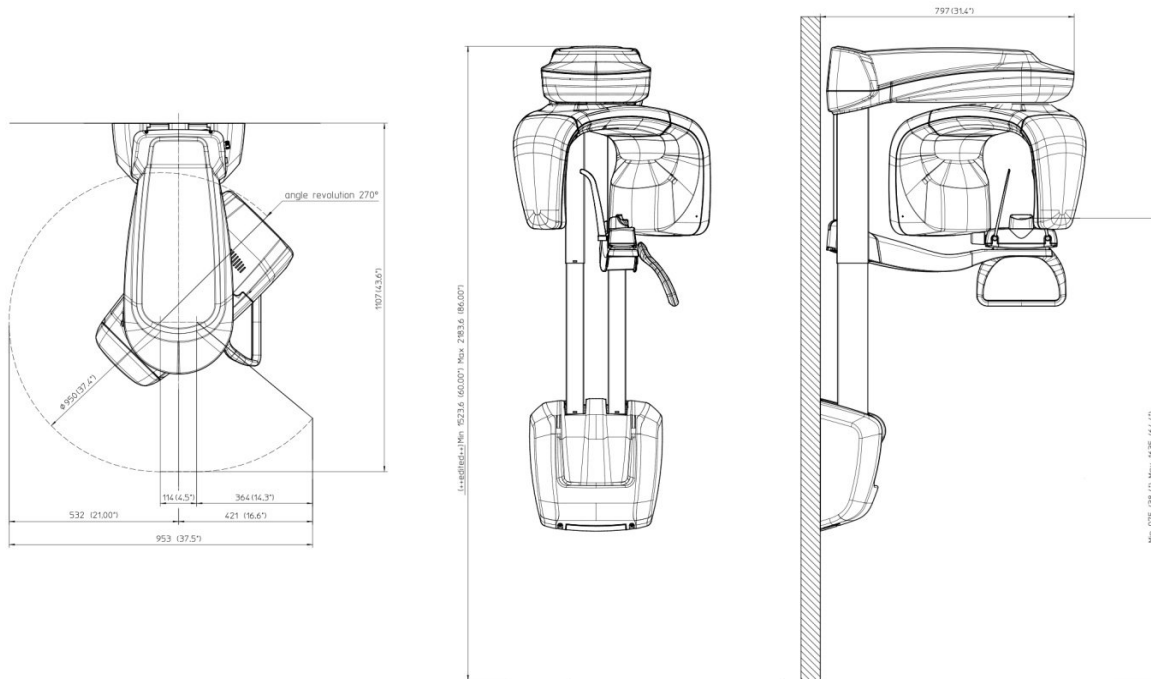


Device ready to be installed on the wall

Wall mounted system : «Easy-To Install ».

# I-Max New generation

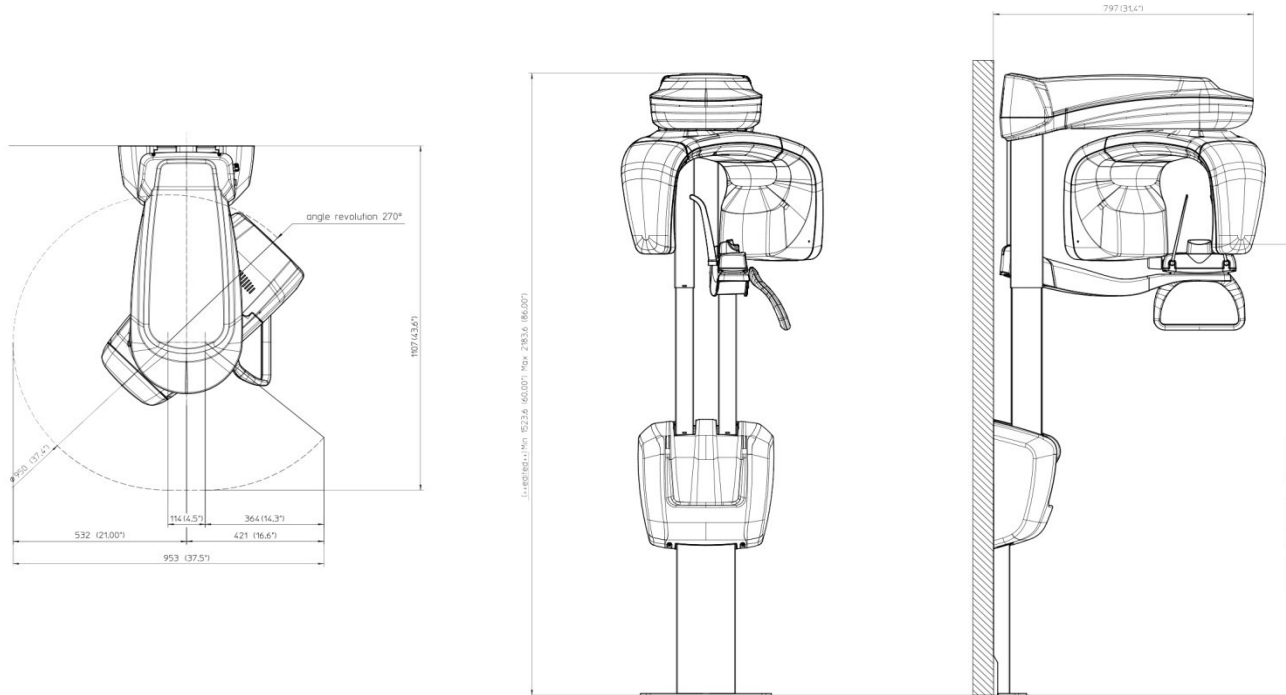
## Dimensions – Footprint of the wall mounted unit



Dimensions  
max :1107x953mm,  
Hmax=2184mm  
Only one square meter!

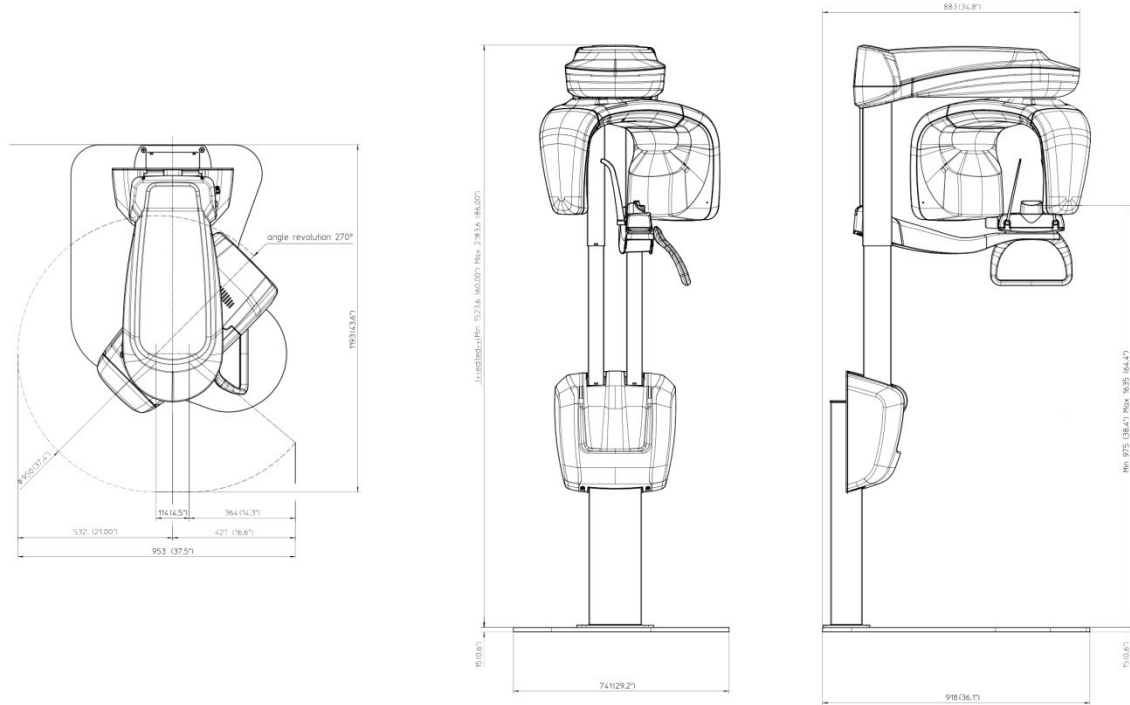
# I-Max New generation

## Dimensions – Footprint of the unit with lower column



# I-Max New generation

## Dimensions – Footprint of the unit with support leg and foot



# I-Max New generation

## New user interface

Very easy to use mode – Just follow the steps:

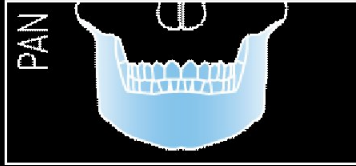
- Step 1 : select the program
- Step 2 : adjust the patient settings
- Step 3 : Modify the automatic settings if necessary



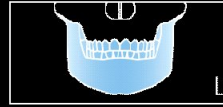
# I-Max New generation

All programs are available – This is not a basic panoramic

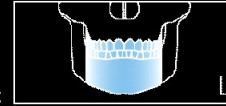
PANORAMIC programs range



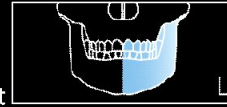
- Standard Panoramic



- Reduced dose Panoramic



- Half Panoramic Left



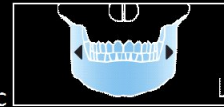
- Half Panoramic Right



- Frontal dentition



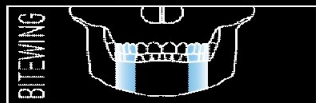
- Improved orthogonality Panoramic



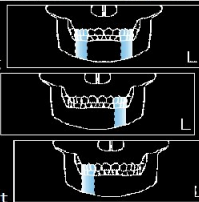
# I-Max New generation

All programs are available – This is not a basic panoramic

## BITEWING programs range



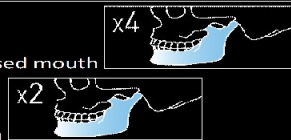
- Standard Bitewing
- Half Bitewing Left
- Half Bitewing Right



## TMJ (Temporal Mandibular Joint) programs range



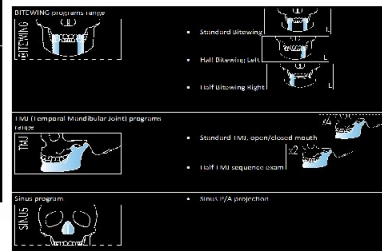
- Standard TMJ, open/closed mouth
- Half TMJ sequence exam



## Sinus program



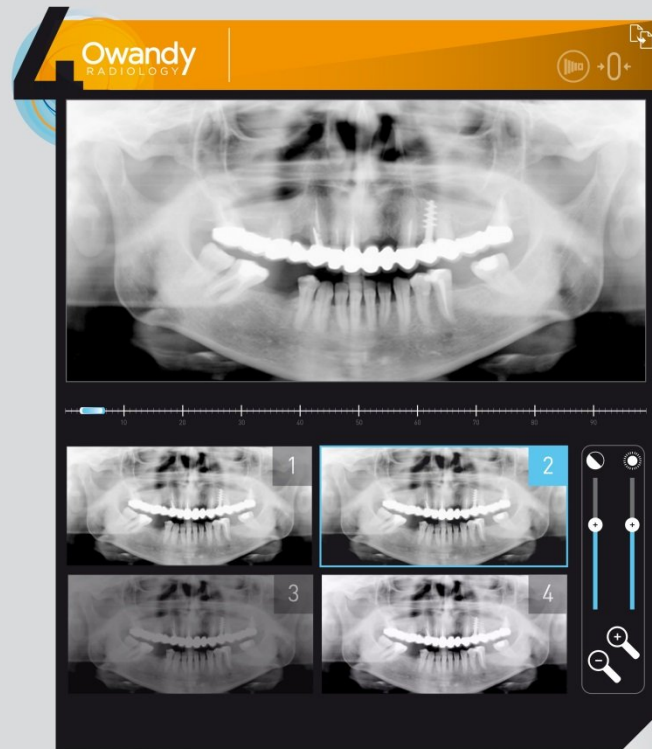
- Sinus P/A projection



# I-Max New generation

## Imaging window :

- The program selects automatically the best picture but offers other choices,
- Decide by yourself in advance what kind of picture treatments you will be interested in and they will be shown on lower small pictures.



# I-Max New generation

## A very simple and easy to use control panel



- Up and down
- Laser settings,
- Temporal rest,
- lights: Xray Ready, Xray ON, computer connection.
- Face to face positioning of the patient

# I-Max New generation

## First pictures



# I-Max New generation

## First pictures



# I-Max New generation

## First pictures



# I-Max New generation

## ERGONOMIC & DESIGN

Innovative design

The smallest system on the market

Face to face positioning

## INNOVATION > REVOLUTION

The first wall mounted panoramic unit

A new way to integrate panoramic in practices

Hygiene – more possibilities to install

## EASY TO USE – EASY TO INSTALL

Very light : 60 kg in one case – Installed by only one person

User interface very simple for a fast and intuitive use

The remote controll can immediately and totally check the unit.

## TOP RANGE PRODUCT

Despite of its attractive price, this unit is complete with all available programs on the market. The best price for value on the market.



# I-Max New generation

## Technical datas

General features		
Manufacturer	OWANDY RADIOLOGY - 77183 Croissy-Beaubourg, France	
Protection degree	IPX0 standard device	
Rated line voltage	220-240 V~	110-120 V~
Line frequency	50/60Hz	
Maximum line current	3,5 A @ 230 V~ 50/60 Hz	
Power consumption	1.6 kVA @ 230 V~ 50/60 Hz	
Line apparent resistance	0.5 $\Omega$ max	--
Line voltage regulation	--	< 3 % at 99 V~
Rated output voltage (kVp)	60 ÷ 70 kVp, with 2 kVp steps	
Anodic current	2 ÷ 7.1 mA, according to r20 scale	
Mechanical characteristics		
Focus-receptor distance	50cm (20")	
Telescopic motorized column run	66cm (26")	
Maximum total height	218cm (86")	
<b>Weight (complete unit, wall mounted version)</b>	<b>62kg</b>	
Weight of optional unit support	6kg	
Working conditions		
Minimum room size	120x120cm (47.2"x47.2")	
Recommended room size	120x140cm (47.2"x55.1")	
<b>Unit footprint dimensions (mm)</b>	<b>1107(wall side)x953mm = 1m<sup>2</sup></b>	

# I-Max New generation

## Technical datas

<b>Tube-head features</b>	
Model	MP 05
Manufacturer	OWANDY - V.S.M. S.p.A. 20090 Buccinasco (MI) Italia
Maximum tube voltage with accuracy	70 kVp $\pm$ 8 %
Maximum anodic current with accuracy	7 mA $\pm$ 10 %
Duty cycle	1:16
Nominal power	490 W (70 kVp - 7 mA)
Total filtration	2mm Al eq. @ 70 kVp
HVL (Half value layer)	> 2.5mm Al eq. @ 70 kVp
Transformer insulation	Oil bath
Cooling	By convection
Leakage radiation at 1 m	< 0.5 mGy/h @ 70 kVp - 7 mA - 3s duty cycle 1/16
<b>X-ray tube features</b>	
<b>Manufacturer</b>	<b>Toshiba (Japan)</b>
Type	D-058
Nominal focus size	0.5 EN 60336
Anode tilt	15.5°
Anode material	Tungsten
Nominal maximum voltage	70 kVp
Filament max current	3 A
<b>Digital Sensor features</b>	
<b>Sensible area (H x L)</b>	<b>PAN sensor: 146 x 6 mm</b>
<b>Sensor pixel dimensions</b>	<b>48x48<math>\mu</math>m</b>
Pixel (H)	PAN: 1536