



OWANDY-105

Communication made easy

Intraoral Scanner

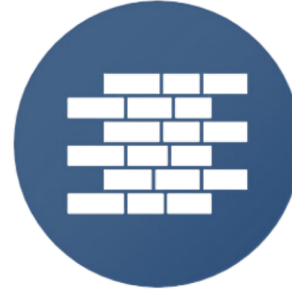
Wireless and Wired versions available



Owandy-IOS

Why **switch to digital** and use an **intraoral Scanner** ?

Fast and accurate



**Digital Workflow
Foundation**

Affordable



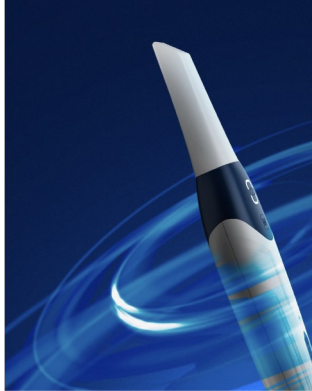
**Engage
patients**

Owandy-IOS

The intraoral scanner that redefines expectations

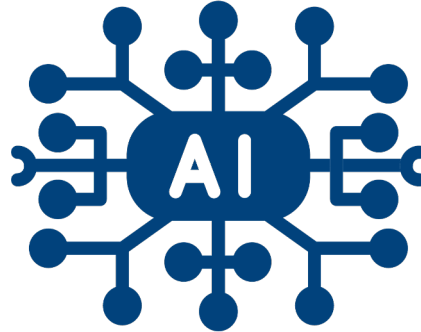
FAST

20 second full arch scan
60 seconds for arches and bites



PRECISE

20 μ m accuracy
AI powered reconstruction



SIMPLE

Dual Scan button
Intuitive interface



Owandy-IOS

Our **affordable intraoral scanner**, is the essential **foundation** to your **digital dentistry** experience.

- **Calibration Free**

First in the industry, high integrity AI-enhanced reconstruction
No calibration required (accuracy or color) !

- **Fast Scan Technology**

Immediate scanning, **no Warm-up**, 20sec full arch scan, 60sec for full mouth.
Thanks to **High Fidelity image and High speed data transfer !**

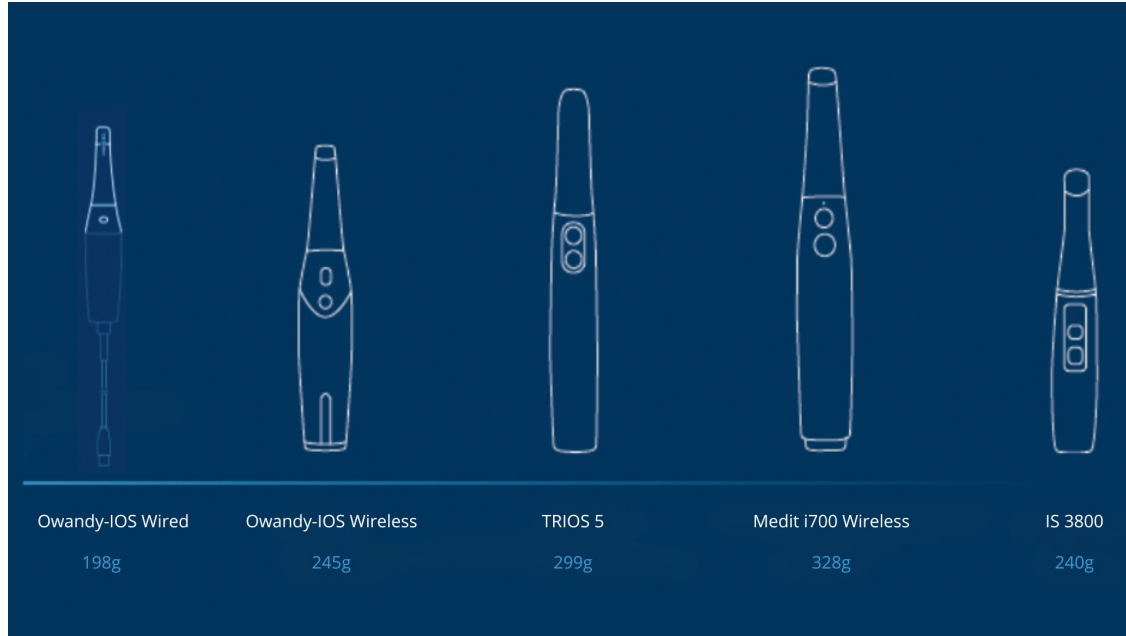
- **20 μ m Accuracy**

Industry leading price/precision ratio
No moving parts, it stays precise !



Owandy-IOS

Super **light handpieces** for your **comfort**



Owandy-IOS

Comfortable for you and your patients



2 Tip Sizes

For different patients



Dual Scan Button

No need to turn the tip



Remote Joystick Mode

No need to touch your PC

Owandy-IOS

Scan quickly and true to reality !



Calibration Free



No warm-up time



True Color

Owandy-IOS Wireless

- **Long Battery Life**

All day battery thanks to Power Save feature
2 hours continuous scanning on a single charge !

- **Comfortable for you and your patient**

Only **245 grams**, **Dual scan button**, 2 tip sizes available

- **Fast Scan Technology**

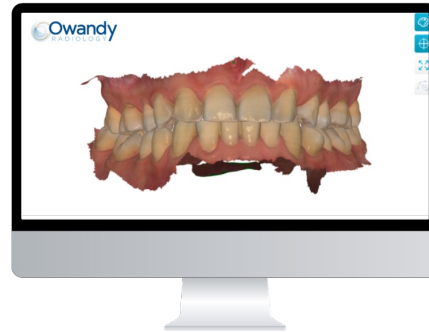
20 second full arch scan, 60 seconds for full mouth.
Thanks to **High Fidelity image** and **High speed data transfer !**



Owandy-IOS Wireless

The intraoral scanner **designed** for **everyday use**

- **All in one battery station with integrated spare battery**
- **No external power supply**
- **Super fast Wifi transmission**



Owandy-IOS Wired

The affordable intraoral scanner, an essential foundation to your digital dentistry experience.

- **Calibration Free**

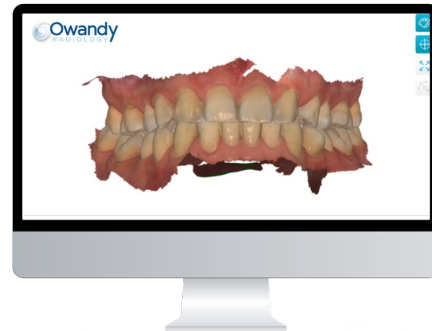
First in the industry, high integrity AI-enhanced reconstruction
No calibration required (accuracy or color) !

- **Easy to use**

USB Connexion, no power adaptor required
Detachable and replacable Cable with Type C port
Only 198 grams !

- **20 μ m Accuracy**

Industry leading precision
Best investment/performance ratio on the market !



Owandy IOS Software



Owandy IOS Dashboard:

Monitor case and order status, track storage usage, access device statistics, and visualize daily scans.



Cloud Storage & Data Synchronization

Seamlessly integrate with cloud storage for efficient file storage and remote data management.



Communication

Built-in direct communication for quick and effective lab interaction, leading to better end-products and time/resource savings.



Patient & Case Management

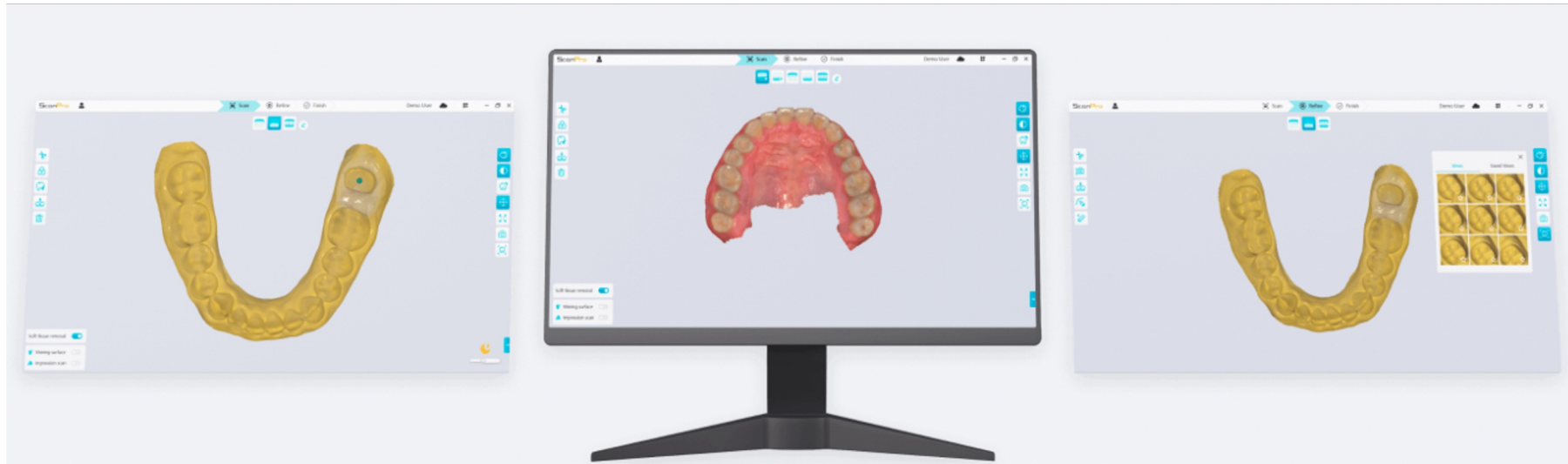
Easily compare patient data over time, access case history, and integrate data from other devices for accurate diagnosis and tailored treatment plans.



Web Viewer & Data Sharing

Conveniently view and adjust scan data, communicate in real-time, and share 3D data links to enhance collaboration and patient care.

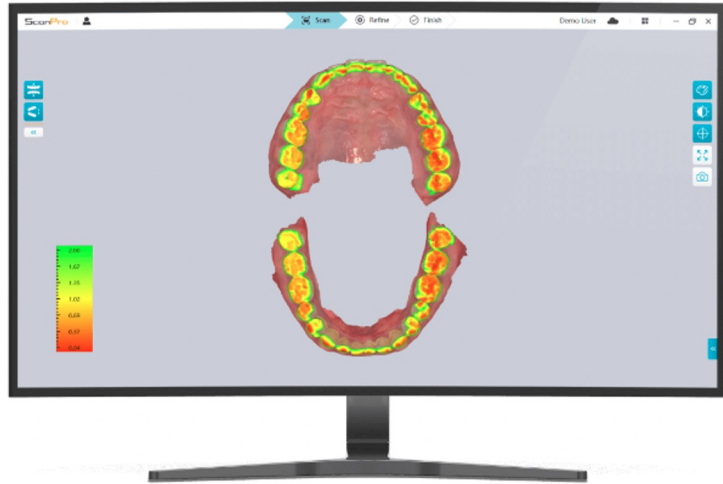
Owandy IOS Software



ScanPro

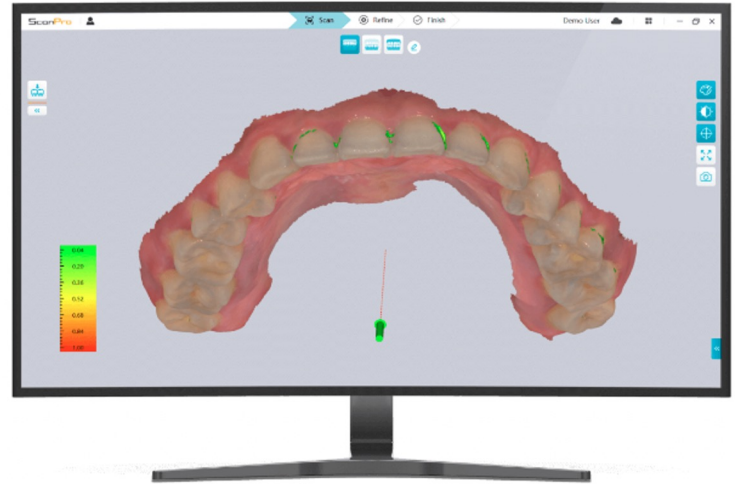
ScanPro provides essential features in a user-friendly interface. Equipped with a variety of tools such as occlusion analysis, undercut detection, measurement, and margin line tools, it allows you to effortlessly capture and edit digital impressions. You can confidently send the edited impressions to labs, knowing that they are accurate and reliable.

Owandy IOS Software



Occlusion Analysis

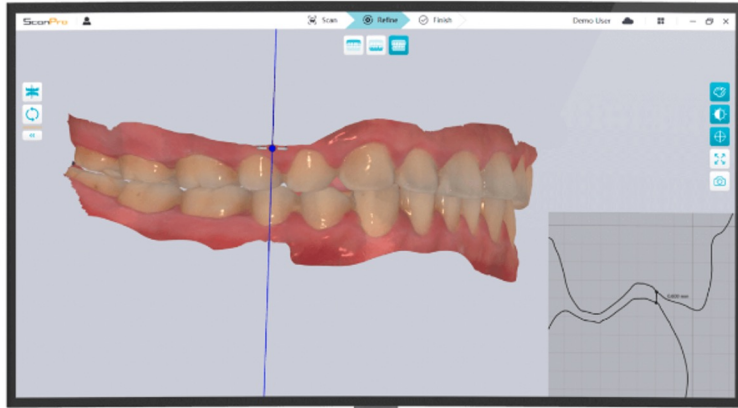
Analyzes the interference between the maxilla and the mandible and visualizes the results using a color map.



Undercut Check

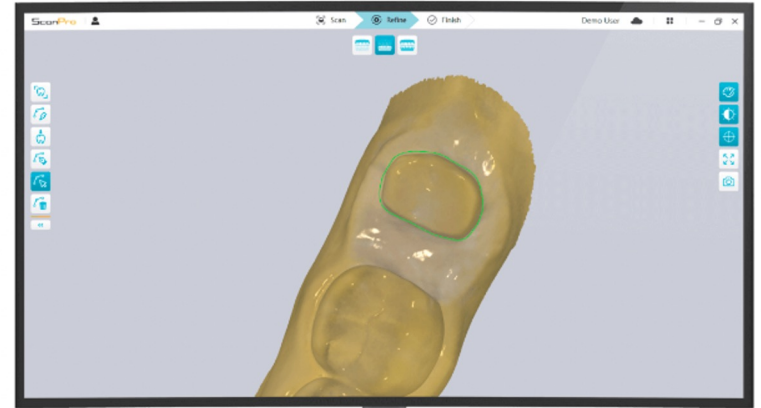
Analyzes the undercut region based on the insertion direction.

Owandy IOS Software



Measurement

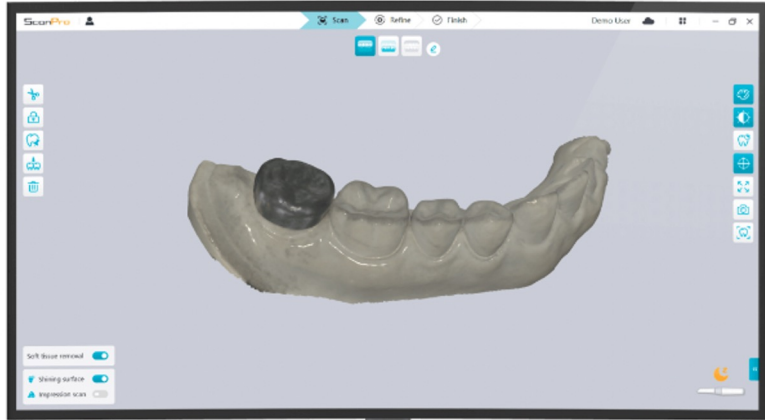
Allows users to measure the distance between two points on a clipping plane.



Margin Line

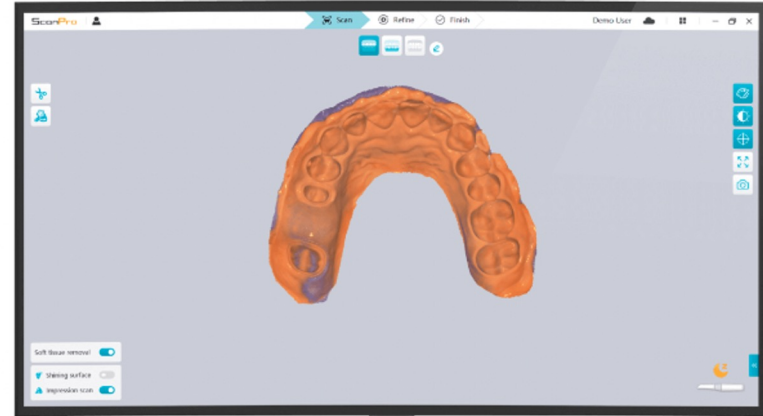
Creates margin lines by automatic detection or manually drawing. These margin lines can be imported into a design program at a later stage.

Owandy IOS Software



Metal Scan

Scanning metal or highly reflective surfaces becomes more effortless and efficient.



Impression Scan

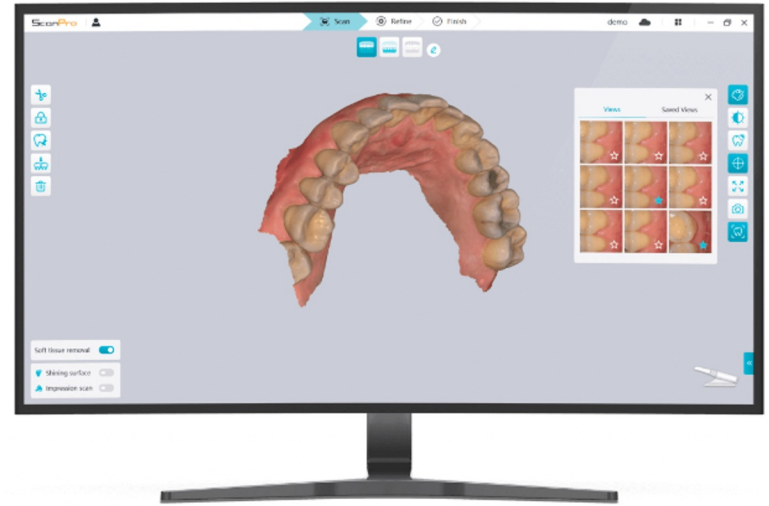
Combines data from both intraoral scans and impression scans seamlessly.

Owandy IOS Software



HD Image

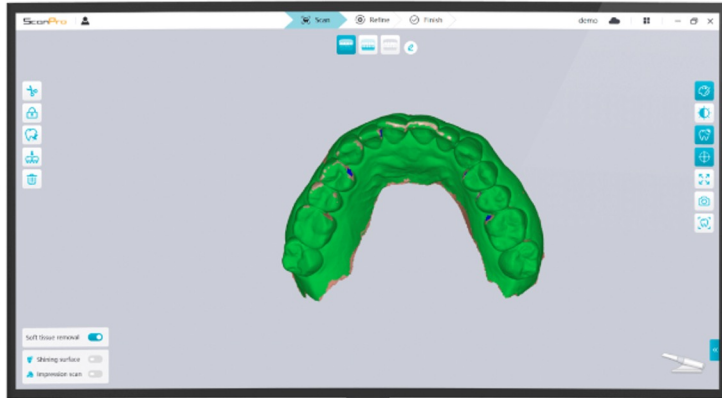
Achieves higher resolution and sharper margin in the working area.



Intraoral Camera

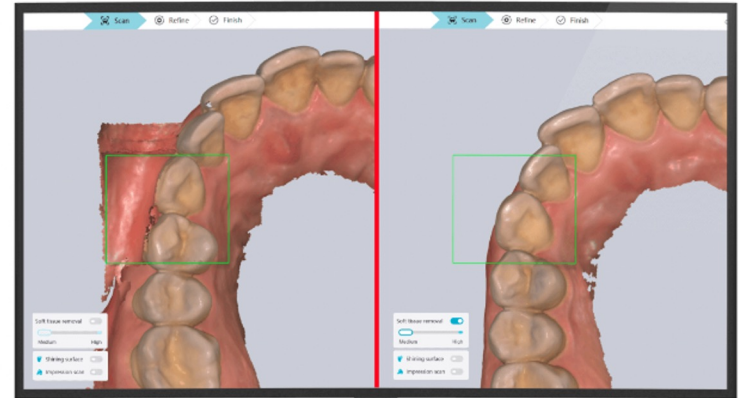
Enables the direct selection of intraoral images from a 3D model, which can subsequently be exported together with the 3D model.

Owandy IOS Software



Scan Quality Detection

Scan quality detection utilizes different colors to indicate the data quality of different regions, prompting users to perform additional scans on areas with less data.



Soft Tissue Removal

The AI-powered algorithm automatically eliminates unnecessary soft tissues, which are the primary hindrance during scanning.

Owandy IOS Cloud Platform



Collaborate with Lab
Exocad® Format



100% Cloud Based
Access files from **anywhere**

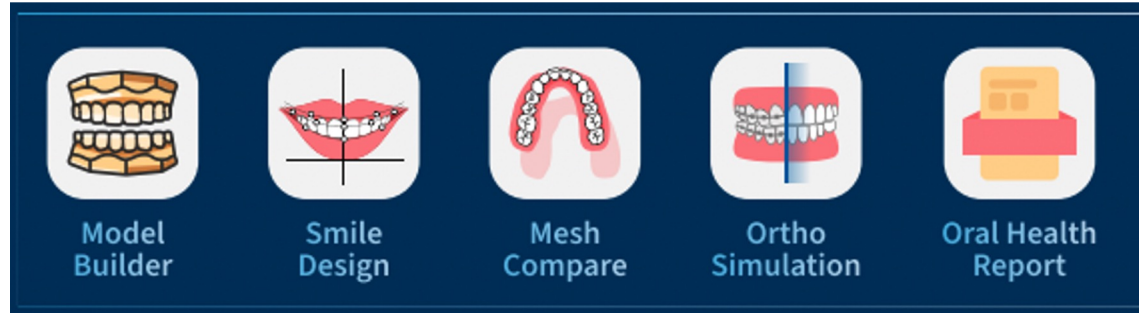


Export your impressions in
.STL .PLY and .OBJ format

Owandy IOS App Store

New **free** apps
all the time

No subscription and
free updates



3rd Party integrations
With leading industry references

Security and conformity :
exclusive storage silos,
servers on every continent

Owandy's Fully Integrated Digital Workflow

Our software suite **streamlines** the **clinical workflow** by bringing together **all patient data** in a **single environment**.

From **image capture** to **prosthetic project**, our software is there to assist you daily

- **Image** management and **patient database**
- **.DICOM** and **.STL** File **automatching**
- Digital **implantology**
- **Automatic Ceph tracing**, 200 exams available

Don't **waste** any more **time**, thanks to **artificial intelligence**
Optimize your workflow and **enhance patient outcomes**



Technical Specifications

Specifications	Owandy-IOS Wireless		Owandy-IOS
Handpiece	Dimensions	248 * 48 * 37 mm	175 * 49 * 39 mm
	Weight	245g (with battery)	198g
Scanning	Full-Arch Accuracy	20µm	
	Depth of field	18 mm	
	Field-of-view	16 * 14 mm (L)	
		12 * 12 mm (S)	
Capture Button	Duo Buttons		
Tip	Size	22 * 18 mm (L)	
		18 * 16 mm (S)	19 * 17 mm (S)
	Autoclavable	Up to 180 times	
		134°C 4mins	
Battery	Scan Duration	120 min	N/A
	Charging	Wireless	N/A
Calibration	CALIBRATION FREE		

Minimum System requirements

	Desktop	Laptop
CPU	9th Generation Intel® Core™ i5-9600 AMD Ryzen™ 5 2600	10th Generation Intel® Core™ i7-10750H AMD Ryzen™ 7 4700U
RAM	16 GB	
Graphics *	NVIDIA GeForce GTX 1650 4GB	
Disk	512 GB SSD	
OS	Win 10 (build 18362+) / Win 11, 64 bit	

Recommended System requirements

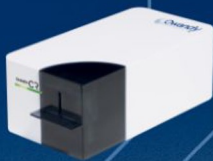
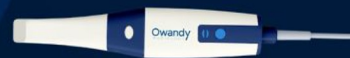
	Desktop	Laptop
CPU	9th Generation Intel® Core™ i7-9700 AMD Ryzen™ 7 2700	10th Generation Intel® Core™ i7-10870H AMD Ryzen™ 7 PRO 4750U
RAM	32 GB	
Graphics *	NVIDIA GeForce GTX 1660 6GB	
Disk	1 TB SSD	
OS	Win 10 (build 18362+) / Win 11, 64 bit	

* NVIDIA graphics cards have full support, while other manufacturers' cards may lack certain advanced features.

Owandy

RADIOLOGY

your partner for *quality diagnostics*



Download our Brochure

Owandy Inc, 55 Lumber Road, suite #145
Roslyn, New-York, NY 11576, USA

Mail: info@owandyus.com

Phone: +1 (516) 858 5695

WWW.OWANDY.COM

