



Presentation:

I-MAX *CEPH*

I-MAX *CEPH 3D*



- 1. I-Max Ceph key points**
- 2. Exams**
- 3. Dimensions**
- 4. Technical features**
- 5. I-Max Ceph pictures**
- 6. I-Max range table**
- 7. Part number & prices**

I-Max Ceph

- New high definition CMOS sensor
- « Low dose » exams
- Intuitive & ergonomic use
- Ultracompact & slight (120kg)
- Ceph unit the most faster to install
- 2 models: 2D & 3D
- Accessible to all



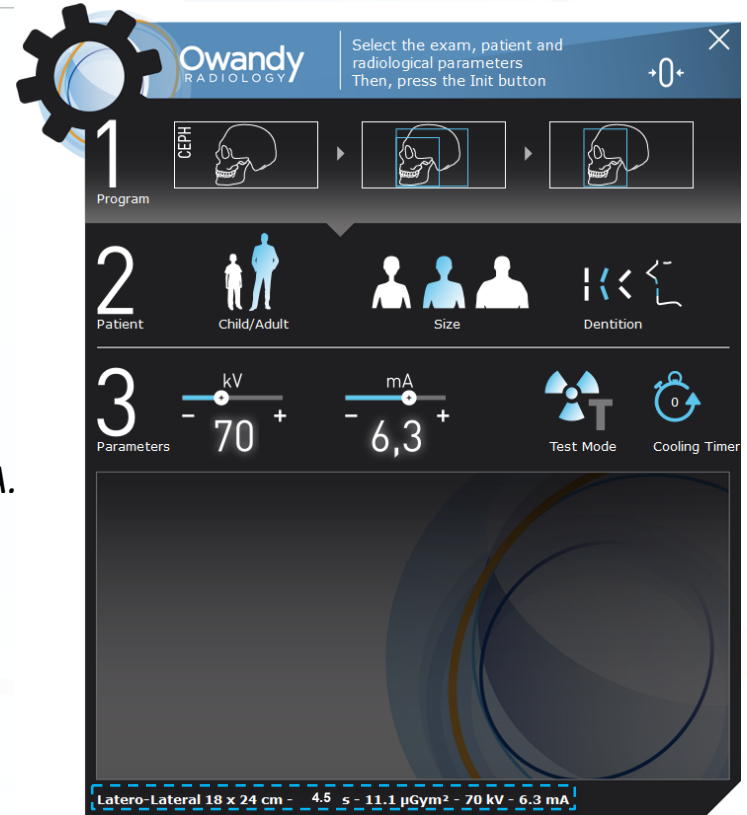
Coming soon!

User-friendly and ergonomic interface

CEPH menu allows 3 different exams:




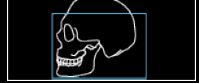
- Latero-lateral
- Antero-posterior / postero-anterior
- Carpus

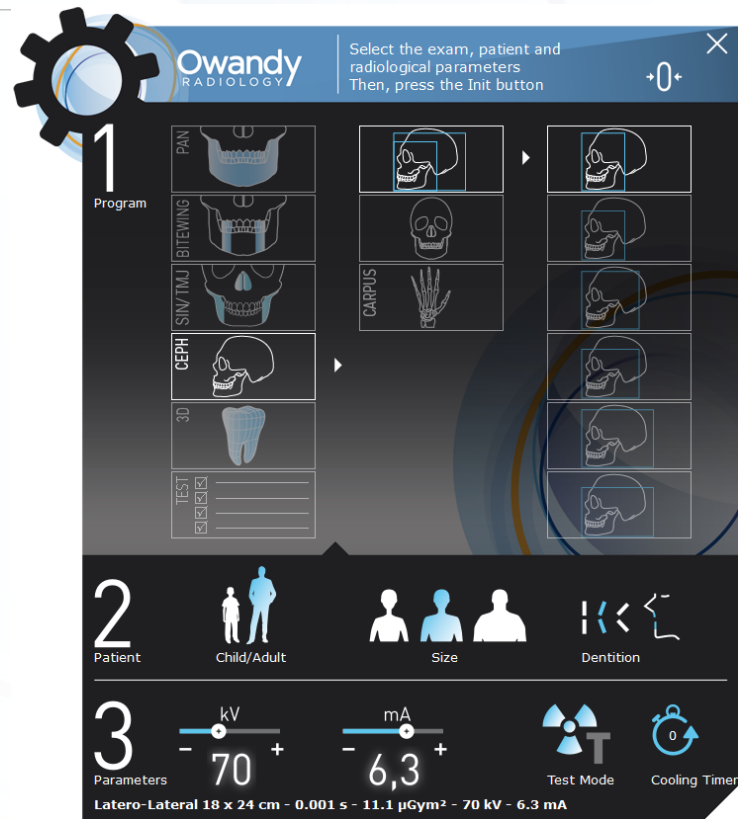
Nb: exam name and characteristics (exposition time, kV, mA, are indicated on the bottom of the interface.



User-friendly and ergonomic interface

Latero-lateral exams



	Latero-Lateral 18 x 24 cm
	Latero-Lateral 18 x 18 cm / Low dose
	Latero-Lateral 24 x 24 cm, with full view of the nape
	Latero-Lateral 24 x 18 cm, with full view of the nape / Low dose
	Mainly latero-Lateral 30 x 24 cm
	Mainly latero-Lateral 30 x 18 cm / Low dose

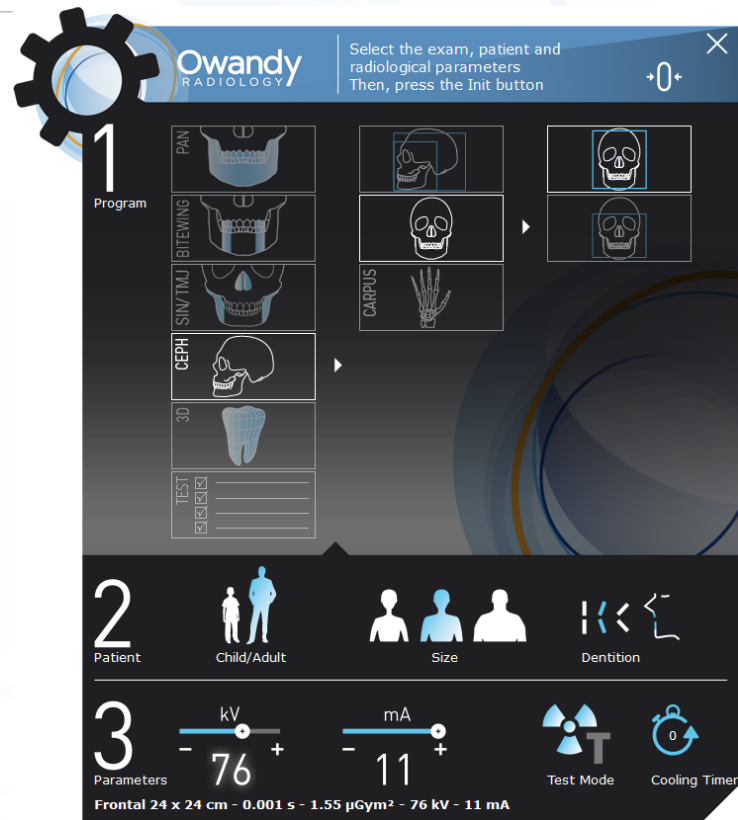


The screenshot displays the Owandy RADIOLOGY interface. At the top, a gear icon and the text "Owandy RADIOLOGY" are visible. Below this, a blue bar contains the instruction: "Select the exam, patient and radiological parameters. Then, press the Init button." A large number "1" is positioned next to a "Program" section containing icons for PAN, BITEWING, SIN/TMJ, CEPH, 3D, and TEST. To the right, a grid of icons shows various anatomical views, with one latero-lateral view highlighted. Below the program selection, a large number "2" is next to a "Patient" section with icons for "Child/Adult", "Size", and "Dentition". At the bottom, a large number "3" is next to a "Parameters" section showing sliders for "kV" (set to 70) and "mA" (set to 6,3). To the right of the sliders are icons for "Test Mode" and "Cooling Timer". At the very bottom, the text reads: "Latero-Lateral 18 x 24 cm - 0.001 s - 11.1 µGym² - 70 kV - 6.3 mA".

User-friendly and ergonomic interface

Antero-posterior / postero-anterior exams

	Antero-posterior or postero-anterior 24 x 24 cm
	Antero-posterior or postero-anterior 18 x 18 cm / Low dose



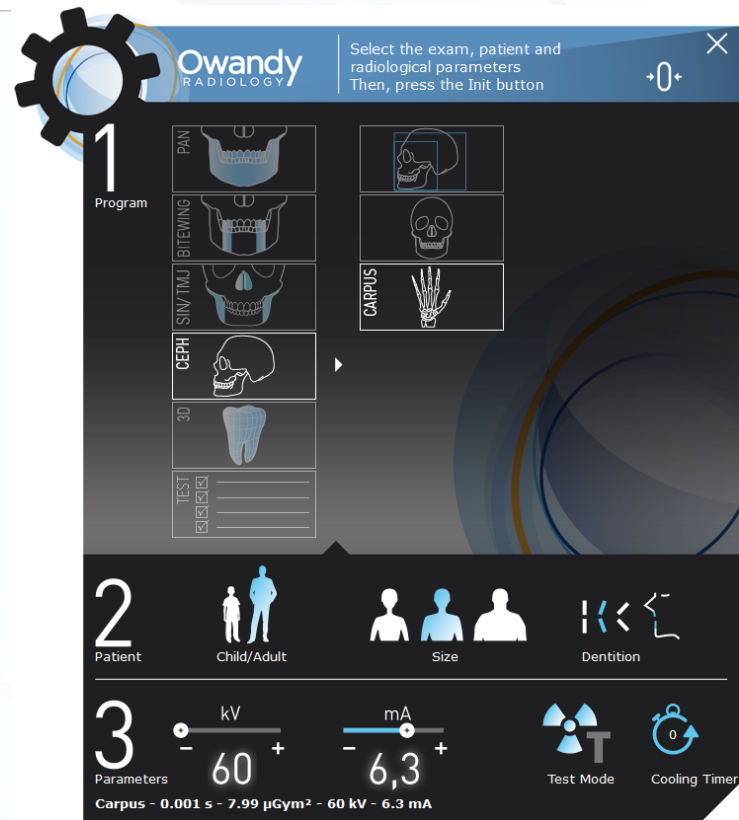
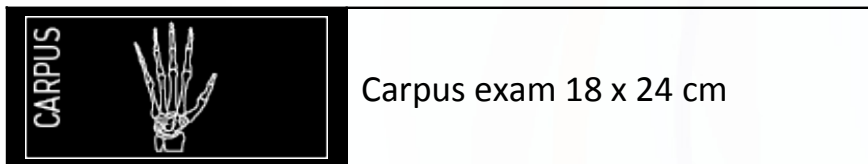
The screenshot displays the Owandy RADIOLOGY interface, which is designed for user-friendly and ergonomic exam selection and parameter setting. The interface is divided into three main sections:

- Program Selection (1):** A vertical list of exam programs including PAN, BITEWING, SIN/TMJ, CEPH, 3D, and TEST. A large gear icon is visible in the top left corner of this section. The text "Select the exam, patient and radiological parameters Then, press the Init button" is displayed in the top right corner of the interface.
- Patient Information (2):** A section for selecting patient details, including "Child/Adult" (represented by icons of a child and an adult), "Size" (represented by icons of three people of different heights), and "Dentition" (represented by icons of teeth).
- Parameters (3):** A section for setting radiological parameters, including "kV" (set to 76) and "mA" (set to 11). It also includes "Test Mode" (represented by a radiation symbol) and "Cooling Timer" (represented by a clock icon).

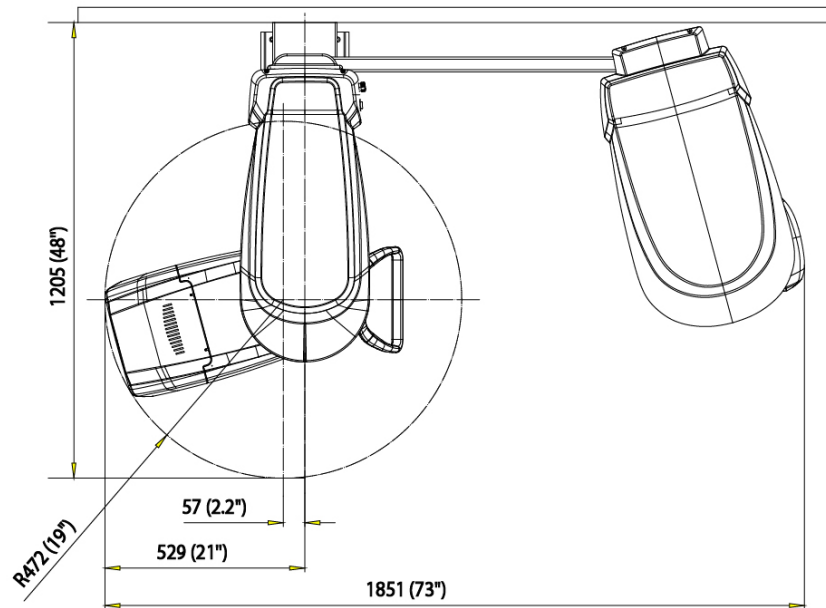
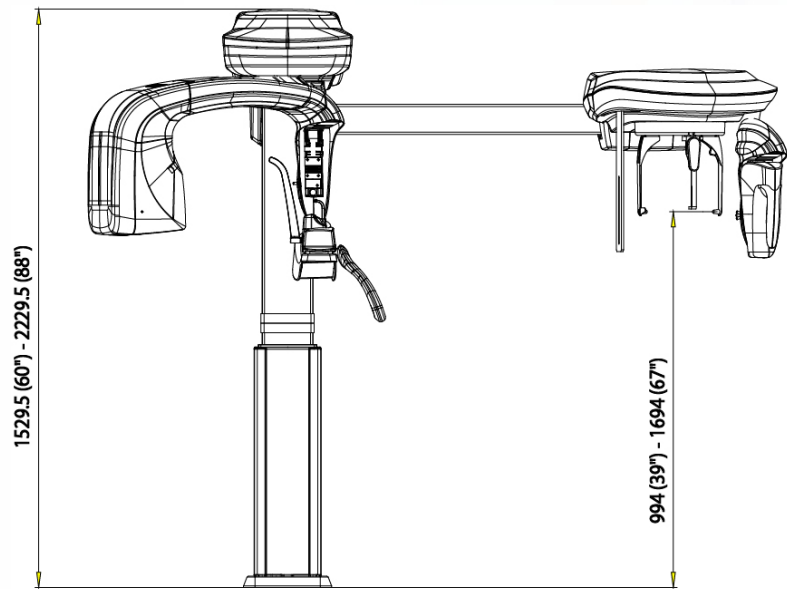
The interface also shows a "Program" section with a large "1" and a "Patient" section with a large "2". The "Parameters" section has a large "3". The "Program" section includes a "TEST" section with checkboxes. The "Patient" section includes a "Dentition" section with checkboxes. The "Parameters" section includes a "Cooling Timer" section with a clock icon.

User-friendly and ergonomic interface

Carpus exam



Dimensions



Technical features

Cephalometric device technical information

	I-Max Ceph 2D	I-Max Ceph 3D
Détector technology	CMOS detector with Csi scintillator	
kV range	60 ÷ 86 kVp with 2 kV steps	
mA range	2 ÷ 12.5 mA according to R20 scale	
X-ray tube model	CEI OPX 105-12	
Focal spot size	0.5 mm (EN 60336)	
Power supply	110-120 V, 220-240 V (± 10%) single phase	
Maximum footprint	121 x 185 cm	
Maximum total height	223 cm (88")	
Weight	120 kg	125 kg
Type of installation	Wall-to-floor mounted Optionnal free-standing floor plate	

3D sensor movement

I-MAX^{CEPH 3D}



*Automatic dropout
when CEPH exam is
selected on the
software*

3D sensor movement

I-MAX CEPH 3D



2D sensor movement

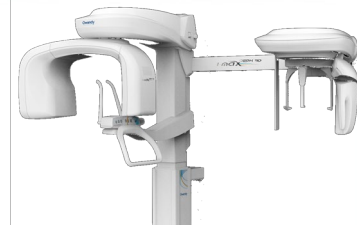
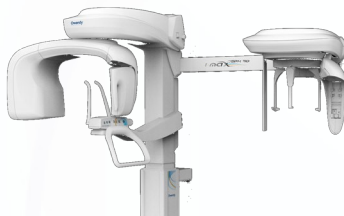
I-MAX CEPH



I-Max Ceph pictures



I-Max range table



	I-Max	I-Max Ceph	I-Max 3D	I-Max 3D Ceph
Panoramic	•	•	•	•
Cephalometric		•		•
3D cone beam			•	•
FOV			12x10*, 9x9, 9x5, 5x5 cm	12x10*, 9x9, 9x5, 5x5 cm
Type of installation	Wall	Wall + floor	Wall	Wall + floor
Options	- Floor mounting base - Wall column	- Floor mounting base	- Floor mounting base - Wall column	- Floor mounting base

Part number & prices

Delivery 09.2019



Part Number	Description	Price
9304201013	Panoramic and cephalometric unit I-Max Ceph 240V	36 500,00 €
E0EXT60-I-MAX-C	Warranty extension to 5 years I-Max Ceph (sensor & generator)	750,00 €



Référence	Désignation	Price
9304201013	Panoramic and cephalometric unit I-Max 3D Ceph 240V	82 500,00 €
EXTVOL3D12x10	F.O.V 12x10 cm option	3 333,33 €
E0EXT60-I-MAX3D-C	Warranty extension to 5 years I-Max Ceph 3D (sensor & generator)	2 000,00€

Présentation I-Max Ceph_05.2019_EN



2, rue des Vieilles Vignes – 77183 Croissy-Beaubourg, France

Tél. : +33 (0)1 64 11 18 18

www.owandy.com