

OWANDY· 

INTRAORAL IMAGING PLATE SCANNER
SO COMPACT, YET SO EFFECTIVE...



OWANDY·CR²

THE MOST COMPACT AND EFFECTIVE
INTRAORAL IMAGING PLATE SCANNER...
ONCE YOU'VE TRIED IT, YOU WON'T WANT
TO USE ANYTHING ELSE!



Optimised sensitivity

The Owandy-CR² features a special cutting-edge concept reading head that optimises the way in which plates are scanned, improving their performance by virtue of a superior signal processing chain. Using this tool, you can produce extremely accurate images at low doses without the risk of overexposure. Furthermore, it uses the entire active surface area of the plate. Lastly, the Owandy-CR² incorporates specially designed image filters and processing to enable you to produce quality images with excellent contrasts.



DEVICE IS SUITABLE TO ALL YOUR CLINICAL PRACTICE



Endodontics



Prosthetic and
implant surgery



Periodontics



Caries
diagnosis



Compact design

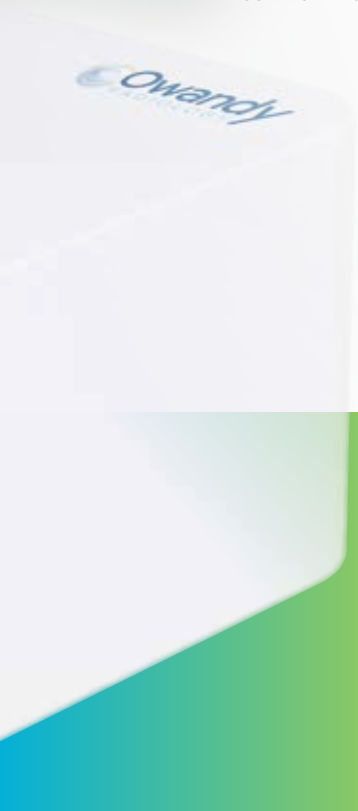
The diminutively-proportioned Owandy-CR² is the smallest system on the market, making it ideal for dental surgeries everywhere. Whether stored under a rack, on a shelf, in a drawer and even on your work surface, its compact, stylish design will add a contemporary and hi-tech touch to your treatment room!



An intuitive tool

Put simply, the Owandy-CR² is fully automatic! Getting to grips with the system is both quick and easy. The Owandy-CR² is highly intuitive: imaging plate detection (including identification of their size and their insertion direction), reading and erasing are automatic. The unit has no complicated user interface as it comprises an automatic wake up and standby mode.

The imaging plates are used in conjunction with a cardboard sleeve and a single-use sterile cover to ensure that the whole system remains sterile. The imaging plate has an excellent life-span as it never comes into contact with either the patient or the practitioner/operator.



#0



#1





OWANDY-CR²
SO COMPACT,
YET SO EFFECTIVE ...
... YOU'LL NEVER WANT
TO BE WITHOUT IT!



Suitable for all types of clinical practice

The OwandY-CR² can be used for endodontics, prosthetic dentistry, implant surgery and periodontics, as well as in caries diagnosis. It is compatible with all imaging plate sizes, making it appropriate for use with all types of scans (bitewing, periapical, posterior images, etc.) and all of your patients:

- Size 0: Child
- Size 1: Incisor block
- Size 2: Adult
- Size 3: Bitewing
- Size 4: (2 x size 3): Occlusal block



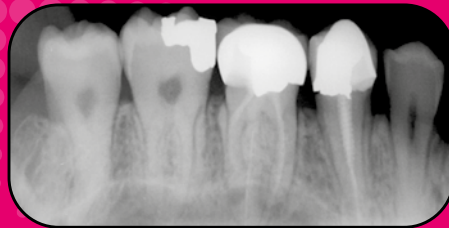
Resource-sharing made easier

The tool's direct USB connection makes it easier to use and install than any other model. Once the imaging plate has been scanned, the image taken can instantly be viewed on the computer screen connected to the OwandY-CR².

This type of connection makes the OwandY-CR² extremely easy to use with single or multi-user systems. But there's no doubt that every dentist in the surgery will want their own tool installed on their own chair...



#2



#3



Stylish, elegant and compact:
the smallest system on the market.



Optimised sensitivity:
high definition images at low doses.



A fully automated tool:
getting to grips with the system is both quick and easy.



Suitable for all types of scans.



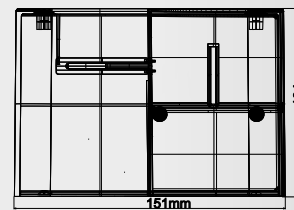
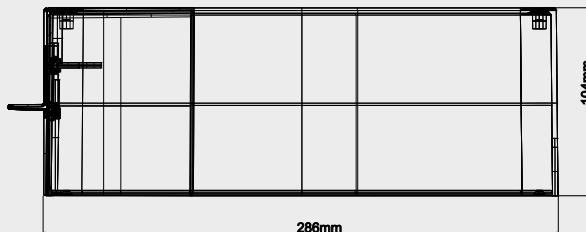
**Makes
resource-sharing
easier.**



Owandy Radiology is an internationally-recognised manufacturer of dental radiology systems and developer of imaging software. Its software is currently used by almost half of the dental practitioners in France and its range of digital imaging solutions is made available to dentists in more than 50 countries worldwide. In addition to its products and services, **Owandy Radiology** strives to contribute to the improvement of oral health and patients' well-being. As a committed and innovative company, **Owandy Radiology** has been a partner of choice for dentists for more than 20 years.

TECHNICAL FEATURES

Technology	Re-usable imaging plate PSP: Photostimulable Phosphor plate
Resolution	34 pixel/mm – 16 Bits
Pixel size	30 µm
Scan time	4 - 9 s
Connection	USB 2.0 & USB 3.0
Dimensions	286 x 151 x 104 mm
Weight	4.25 kg
External power supply	100-240 Vac, 50/60Hz, 60W
Plate size selection	Automatic detection
System standby mode	Automatic function
Plate sizes	Size 0 : 31 x 22mm, 1024 x 726 pixels Size 1 : 40 x 24mm, 1321 x 792 pixels Size 2 : 41 x 31mm, 1354 x 1024 pixels Size 3 : 54 x 27mm, 1783 x 891 pixels
Operating system	Windows 7, 8, 10 (32-64 Bits)



Medical device class IIa/CE0051. Read carefully the instructions before use.



Dealer's stamp

Owandy Radiology

2, rue des Vieilles Vignes
77183 Croissy-Beaubourg

FRANCE

Tel.: +33 (0)1 64 11 18 18

Fax: +33 (0)1 64 11 18 10

info@owandy.com

www.owandy.com



DIGITAL SENSORS

IMAGING PLATE SCANNER

2D - 3D PANORAMICS

INTRAORAL RADIOLOGY

CAMERAS

SOFTWARE